



* 1 3 9 7 E 1 3 9 7 *

edilians.com

NOS SOLUTIONS



Toiture

Façade

Éco-habitat

TPVXL

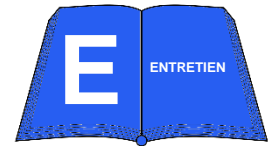
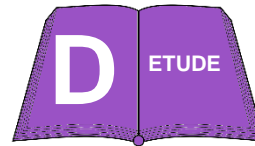
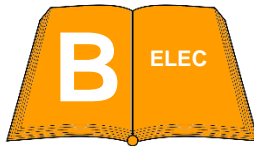
NOTICE DE MONTAGE

C-TPVXL-01/06/2022

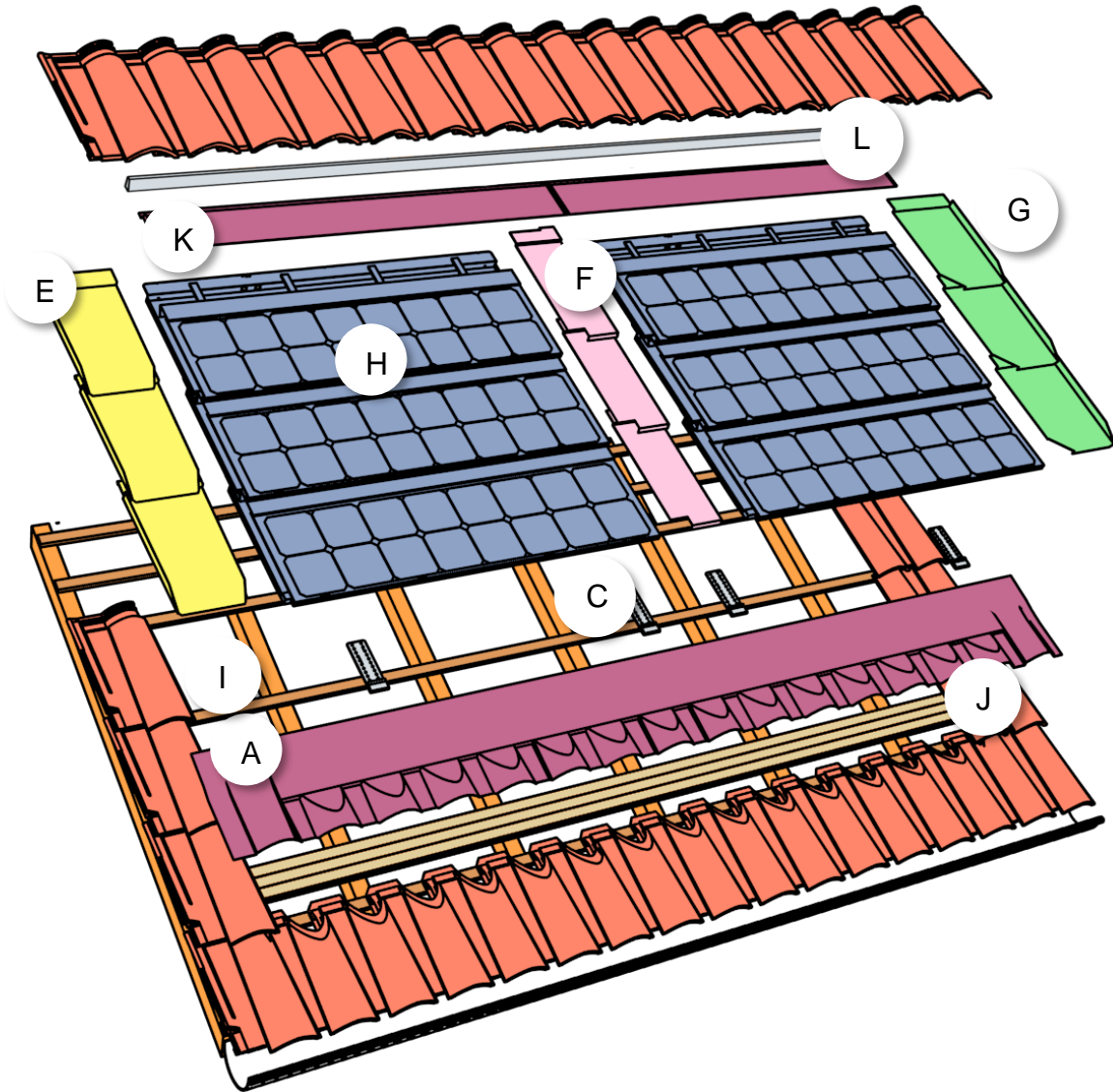
Tutoriel vidéo : <https://youtu.be/2FYUfJ1vzYg>

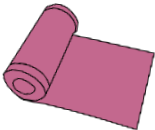

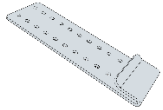
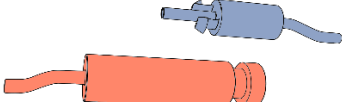
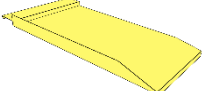
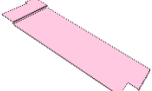
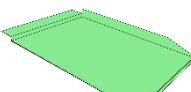
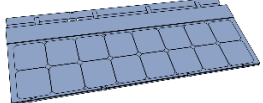
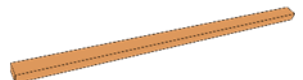
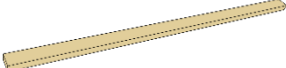




EDILIANS

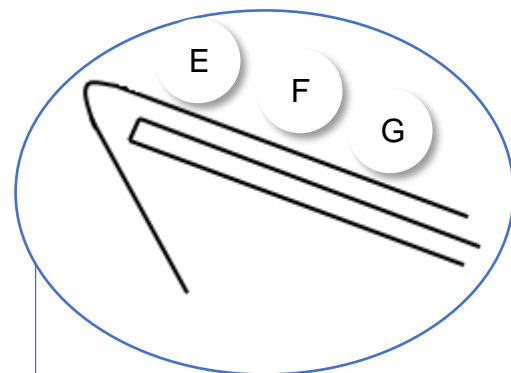
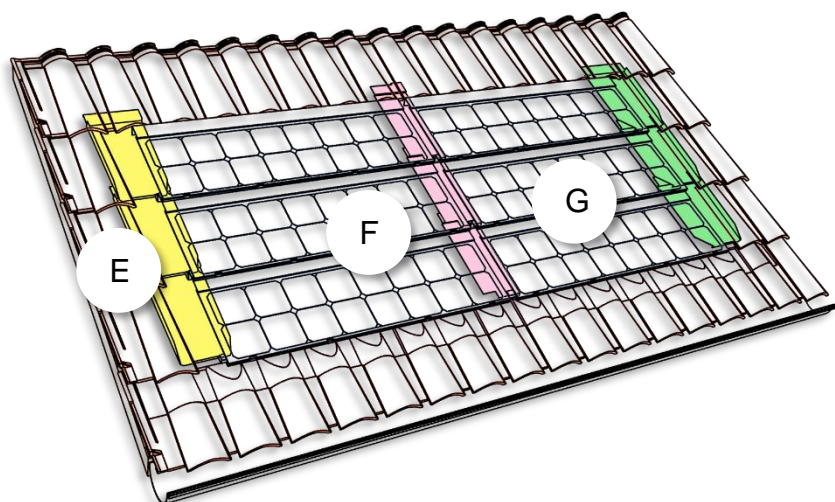


NOMENCLATURE

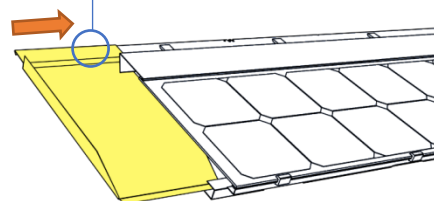
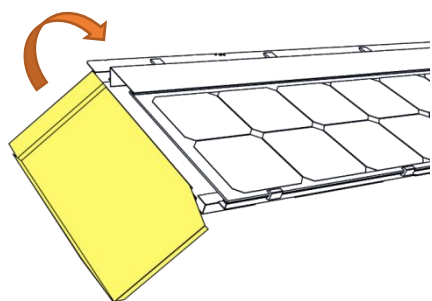


- A** 
Bavette souple
- B** 
Câble de terre / Double cosse
- C** 
Crochet d'égout
- D** 
Connecteurs DC
- E** 
Couloir gauche
- F** 
Couloir central
- G** 
Couloir droit
- H** 
Tuile photovoltaïque
- I** 
Liteau identique au liteau de couverture
- J** 
Liteau 20x40 ou 15x40
- K** 
Bavette rigide (selon pureau)
- L** 
Mousse triangle

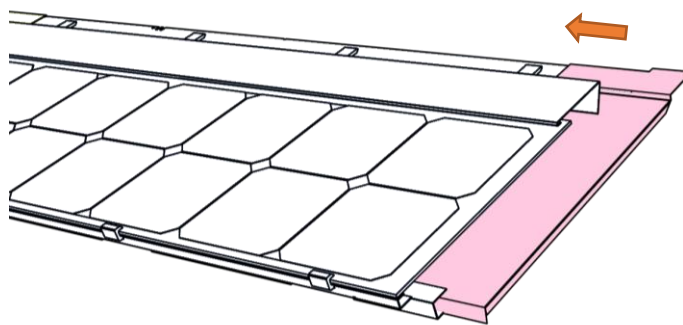
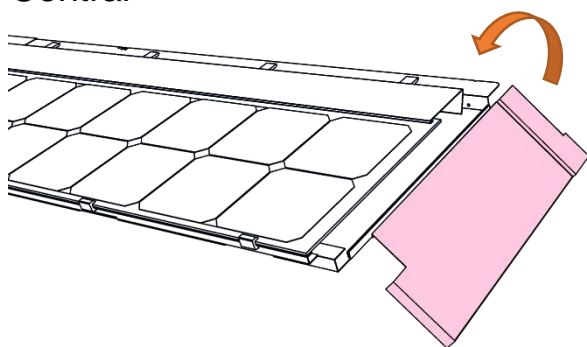
1. MISE EN ŒUVRE DES COULOIRS SUR TUILE PHOTOVOLTAÏQUE



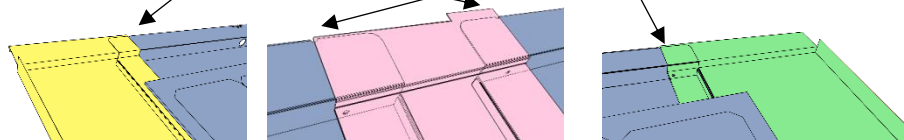
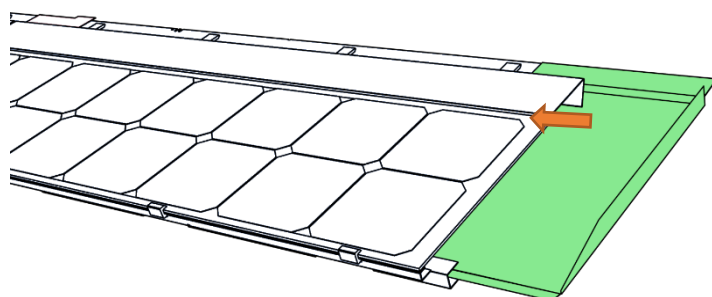
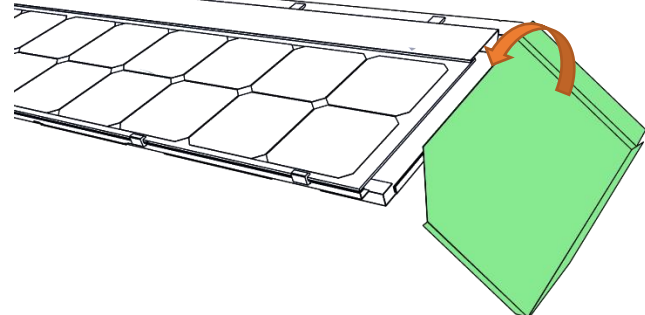
Gauche



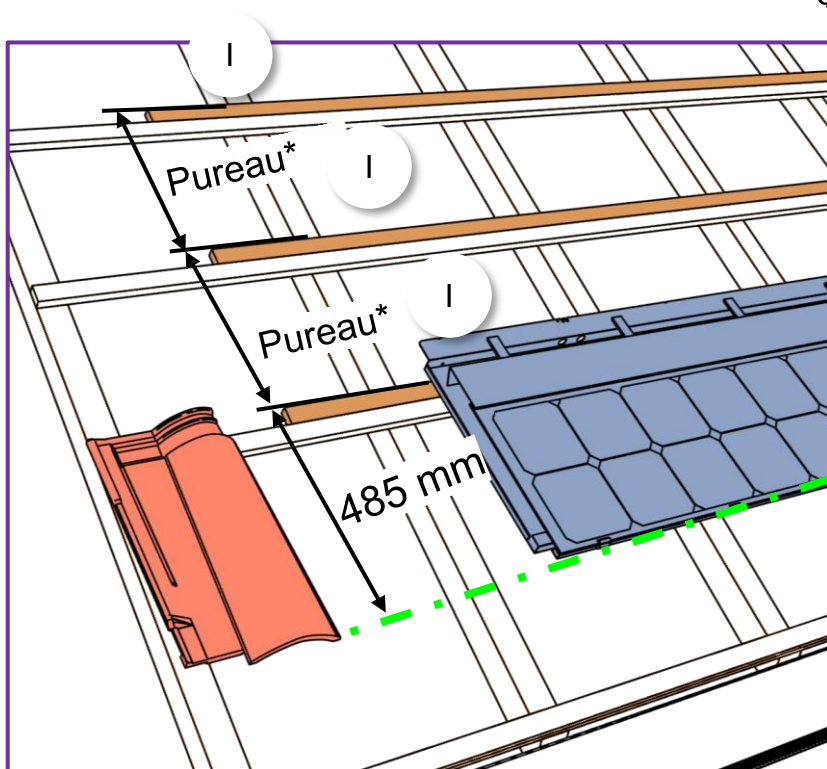
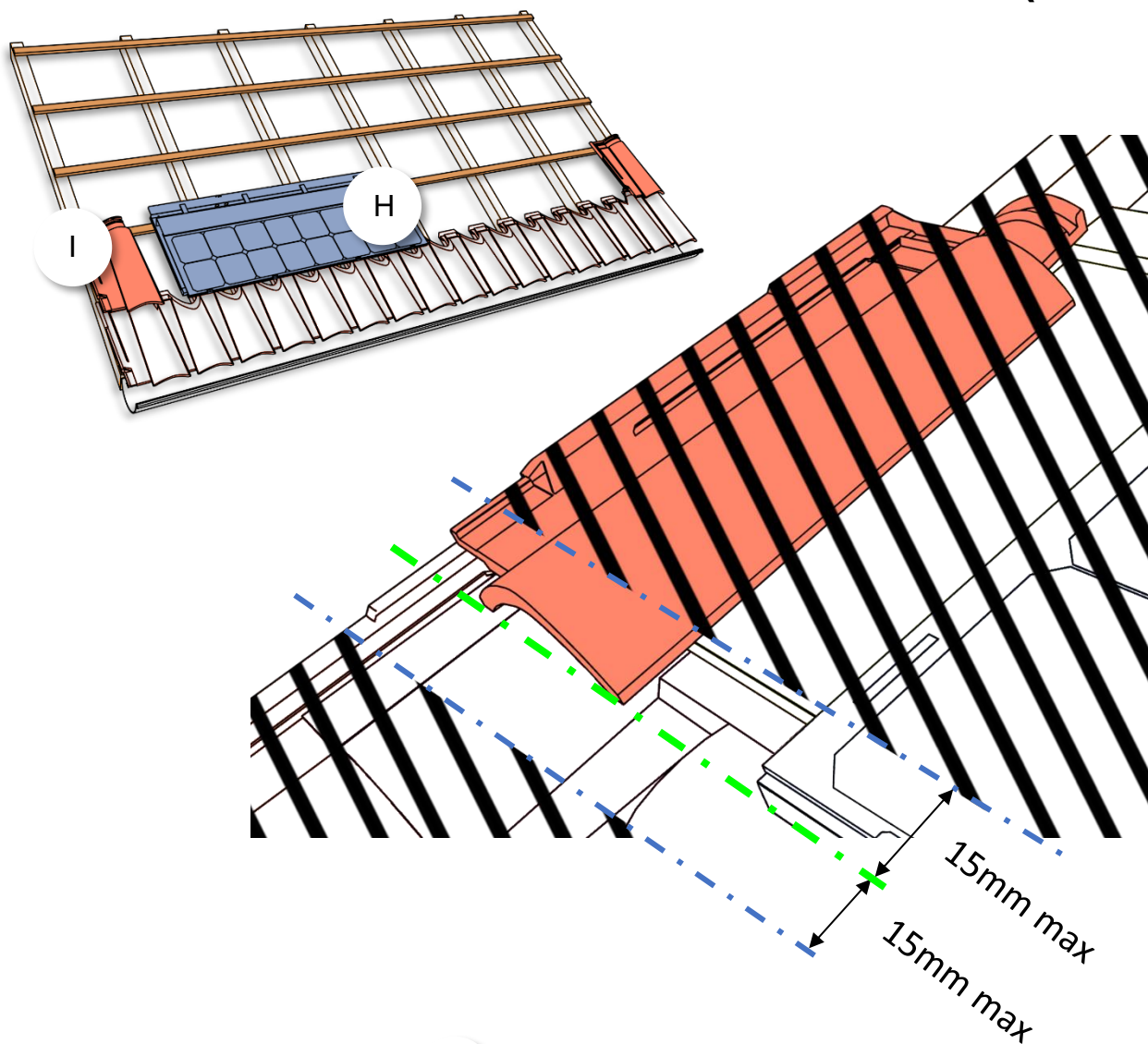
Central



Droite



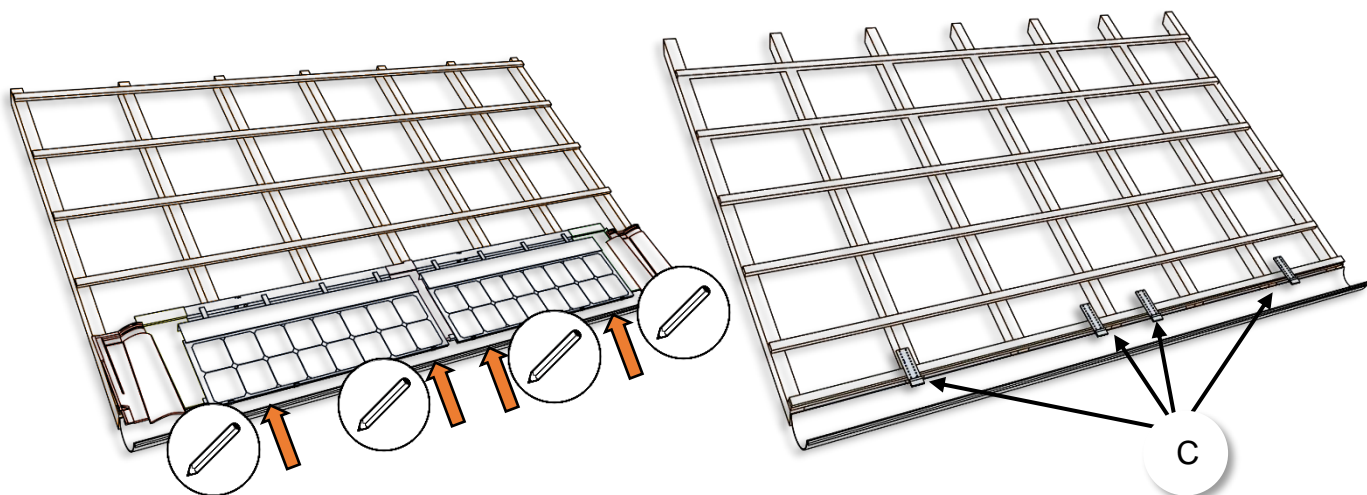
2. CÂLAGE DES LITEAUX PHOTOVOLTAÏQUE (SI BESOIN)



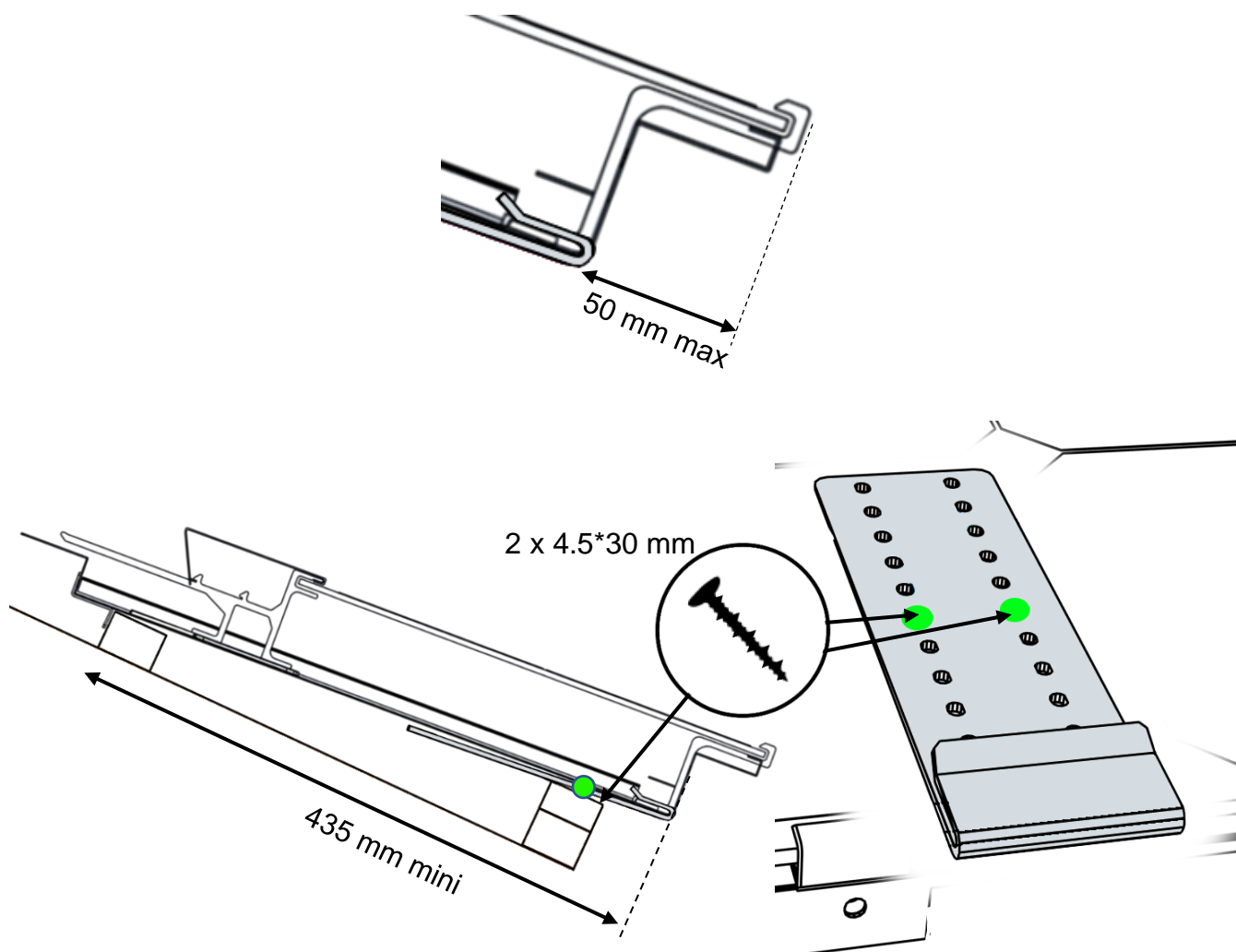
*TPVXL : 360 à 400mm / *TPVXL+ : 390 à 440mm

3. FIXATION DES CROCHETS D'EGOUT

Cas 1 : Pose à l'égout (impossible si égout scellé ou sablières)

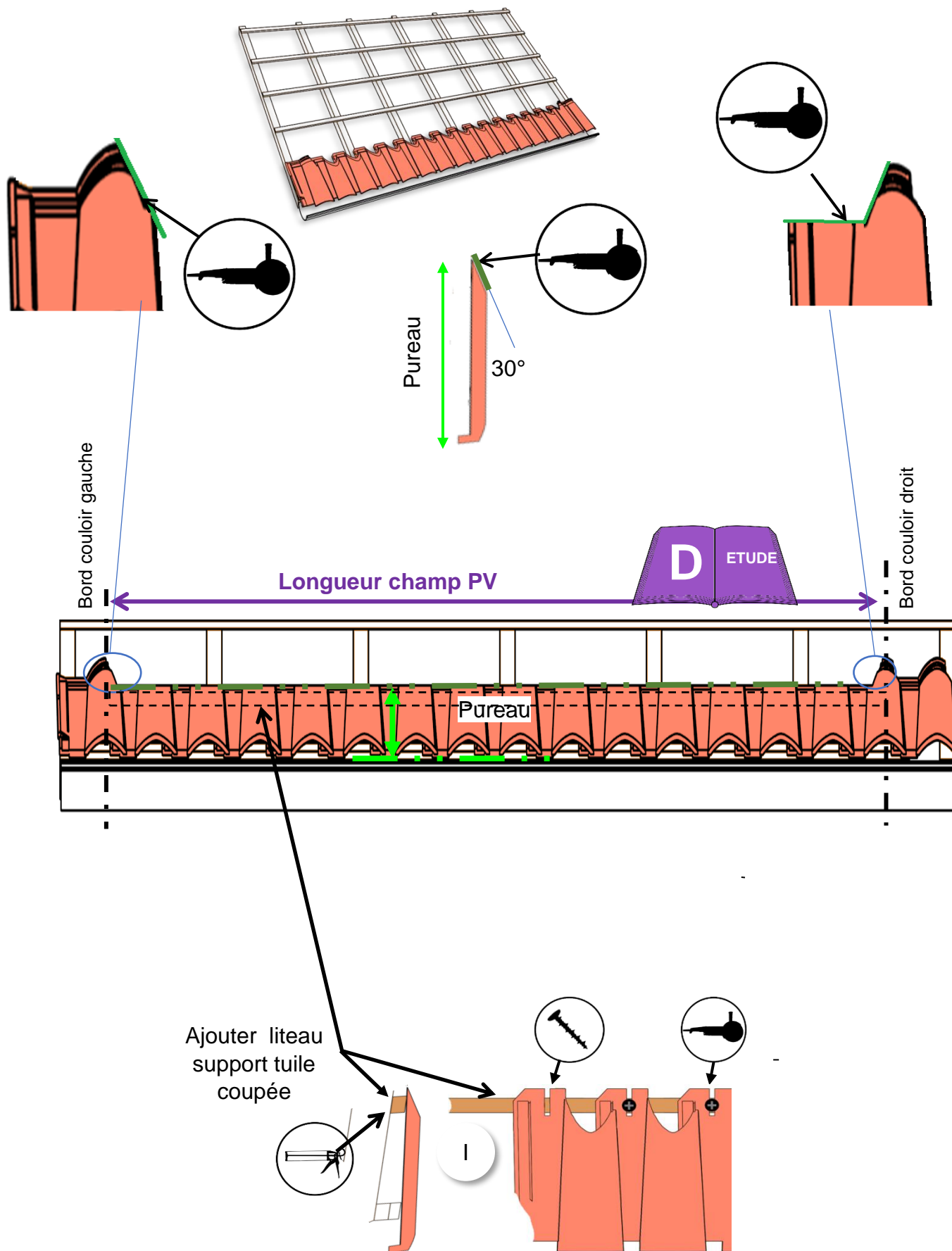


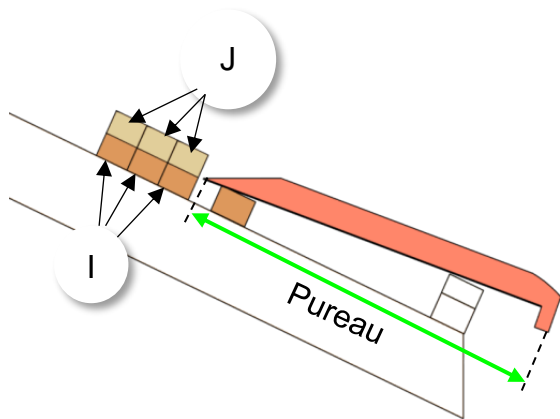
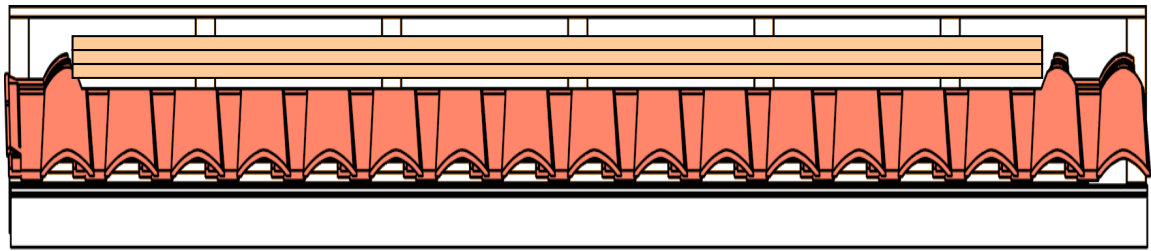
Présenter la ligne du bas du champ photovoltaïque sur la toiture, positionner les produits de couverture à chaque extrémité puis, repérer la position des crochets d'égout en face des encoches à droite et à gauche du châssis.



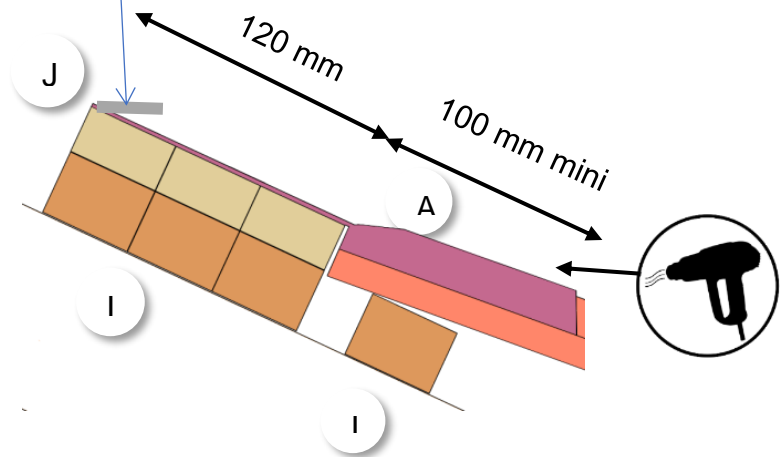
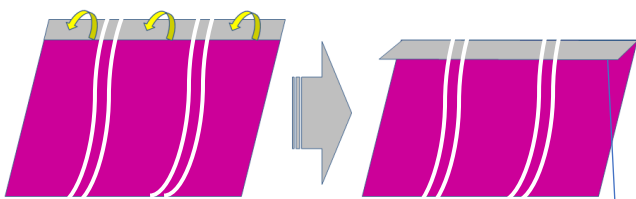
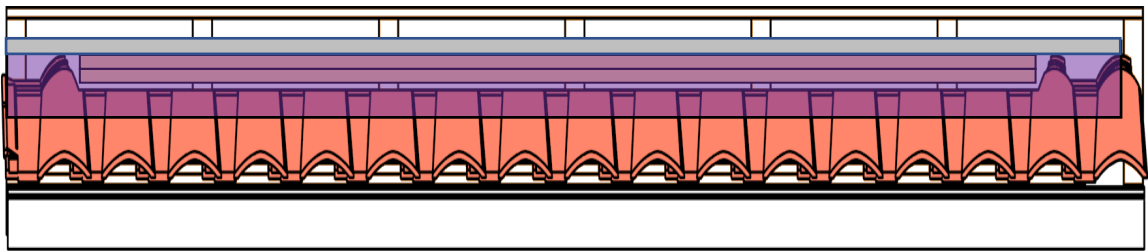
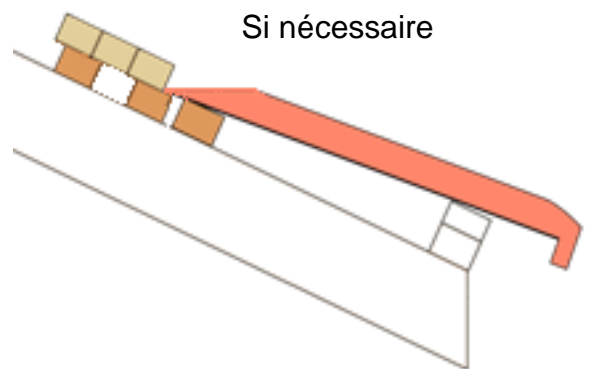
Cas 2 : Pose en plain carré avec zone de recouvrement non-plane

2.1 Coupe des produits de couverture et pose de la bavette souple

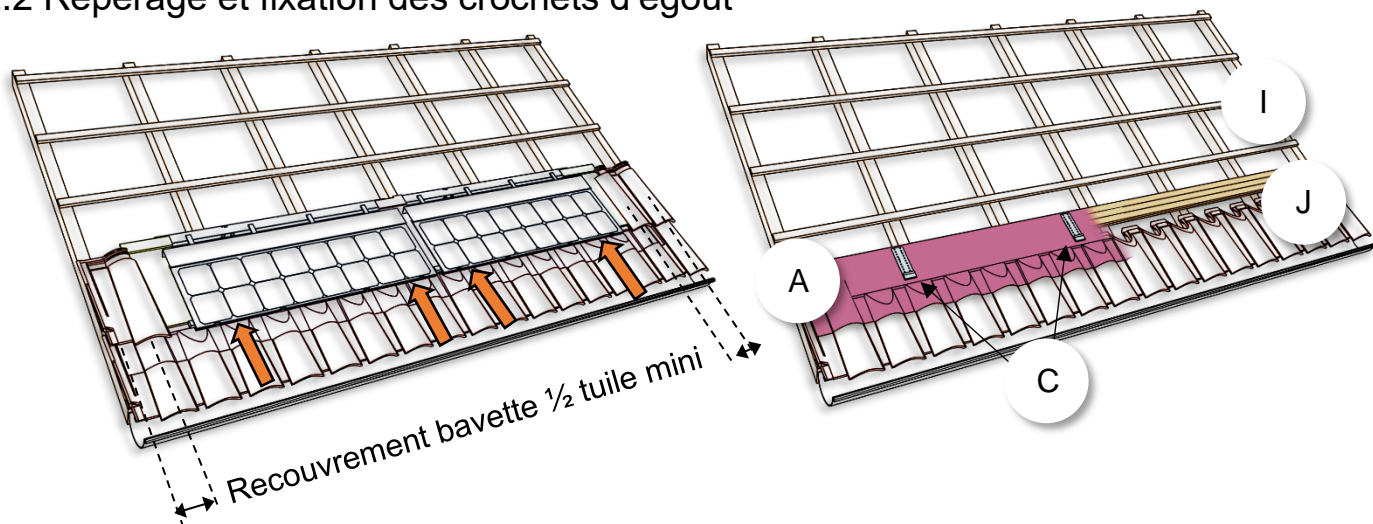




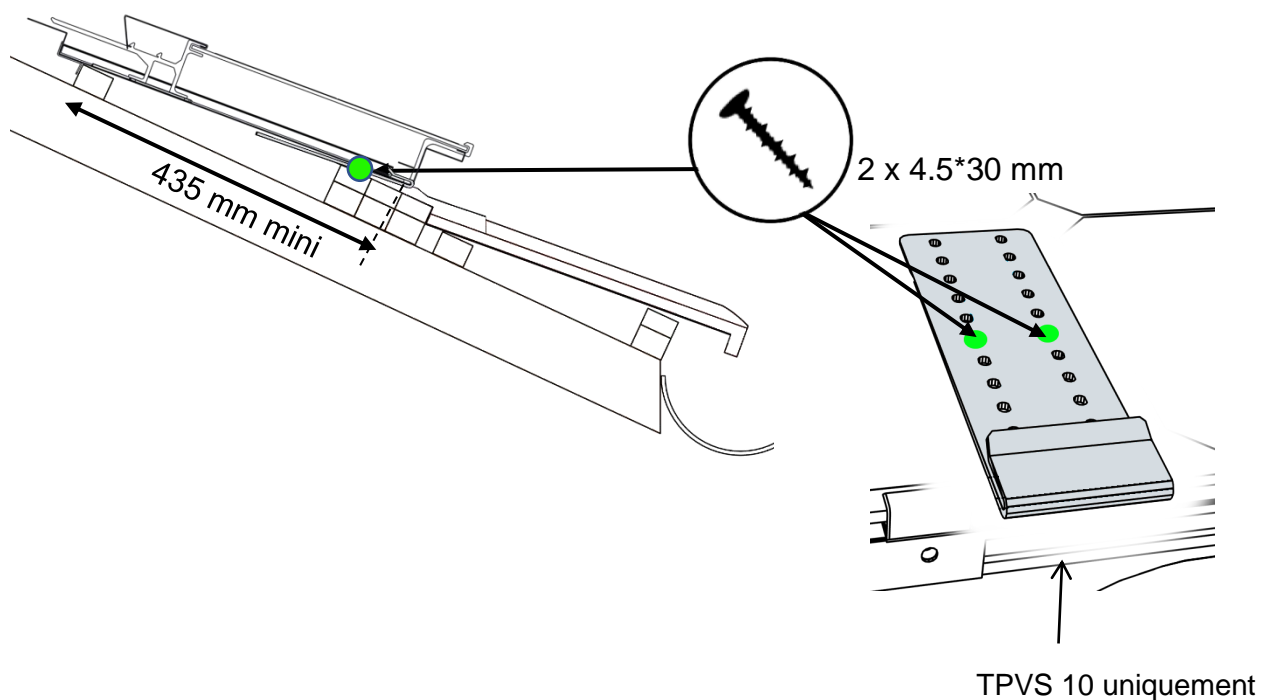
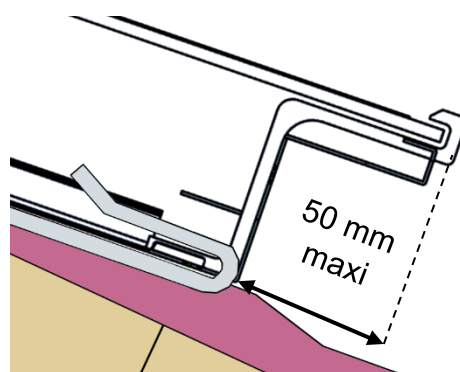
ou



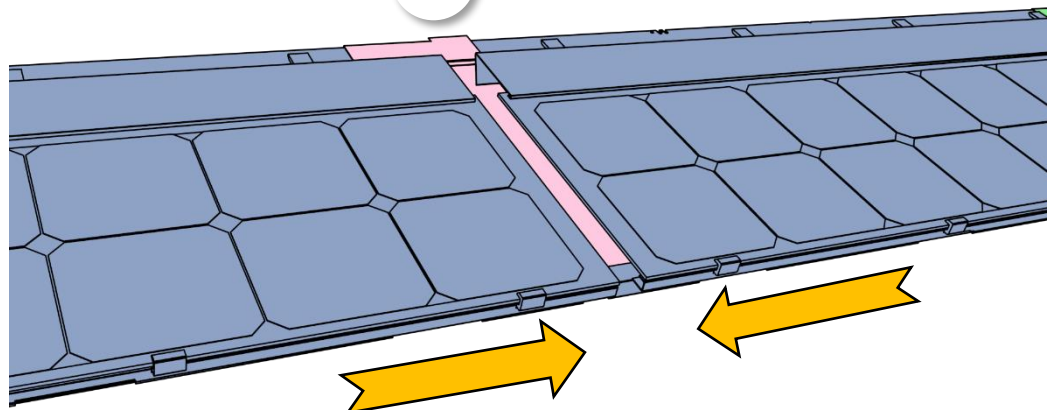
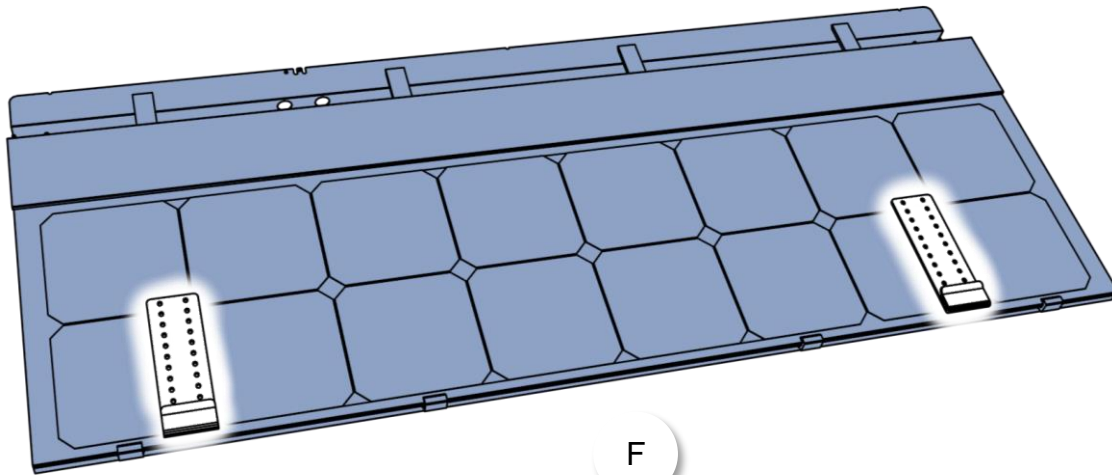
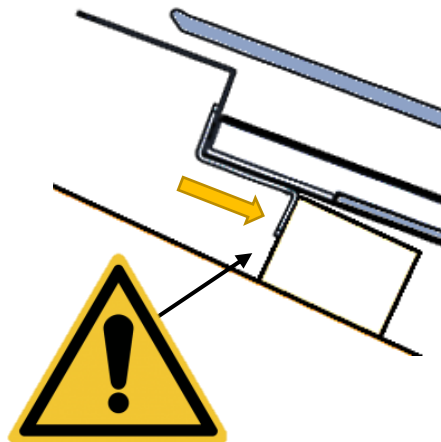
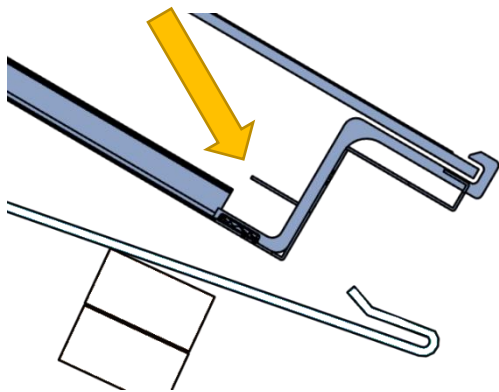
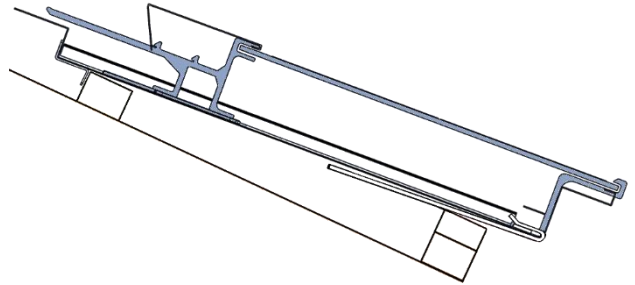
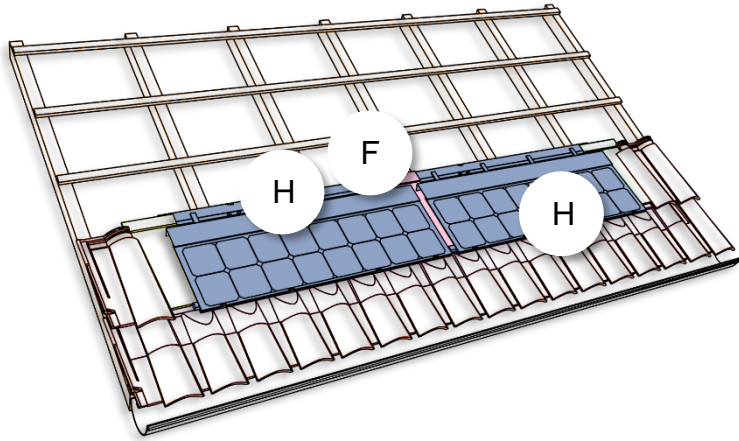
2.2 Repérage et fixation des crochets d'égout



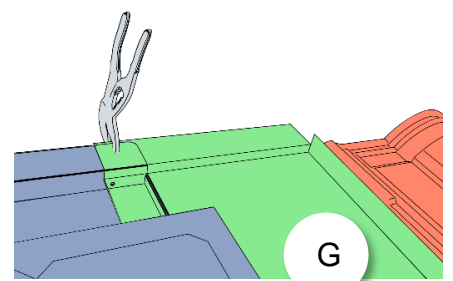
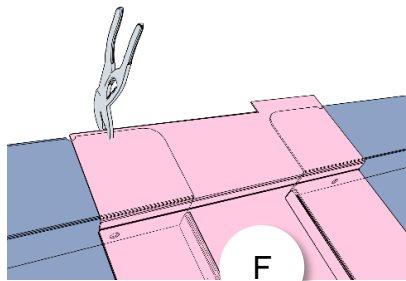
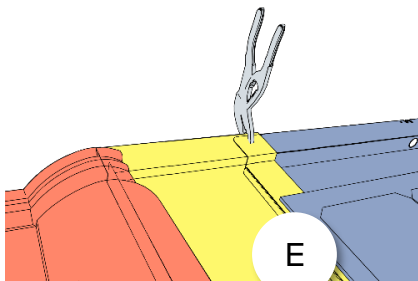
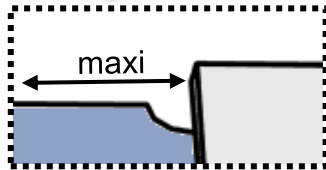
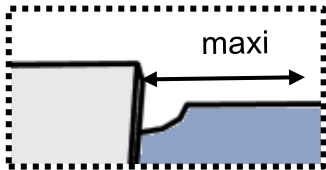
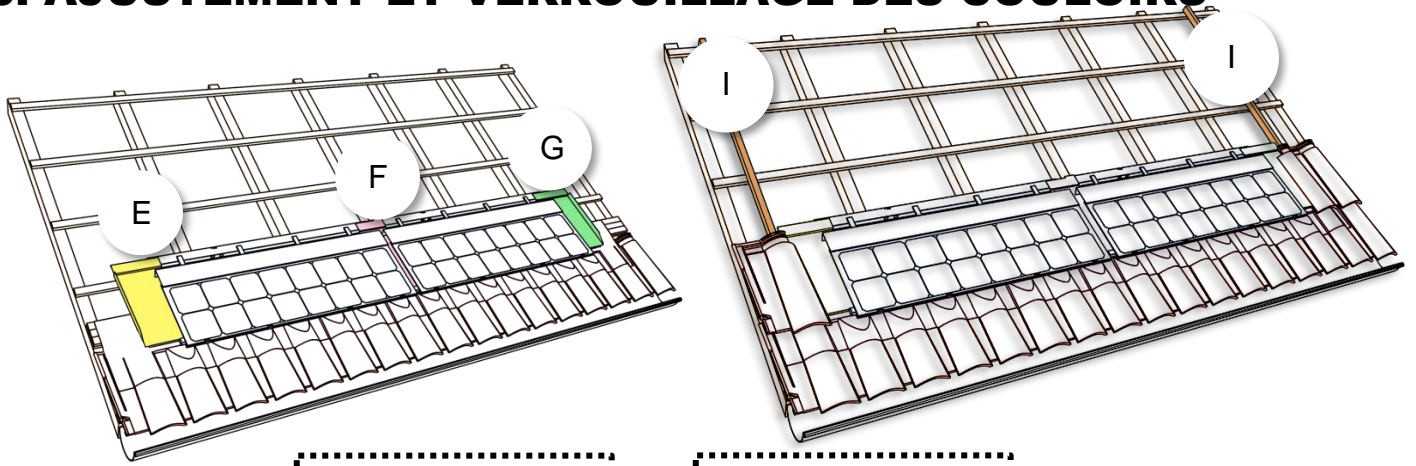
Présenter la ligne du bas du champ photovoltaïque sur la toiture, positionner les produits de couverture à chaque extrémité puis, repérer la position des crochets d'égout en face des encoches à droite et à gauche du châssis.



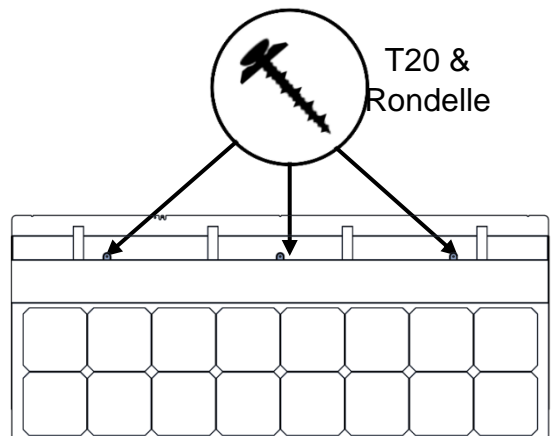
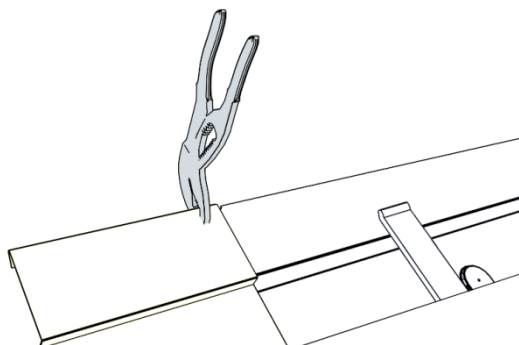
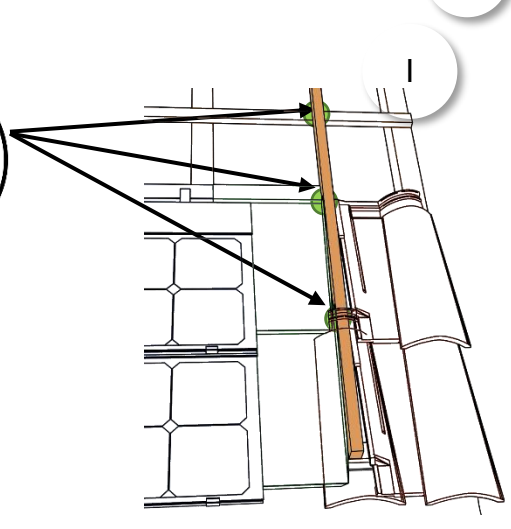
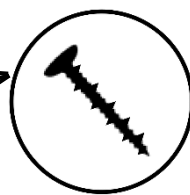
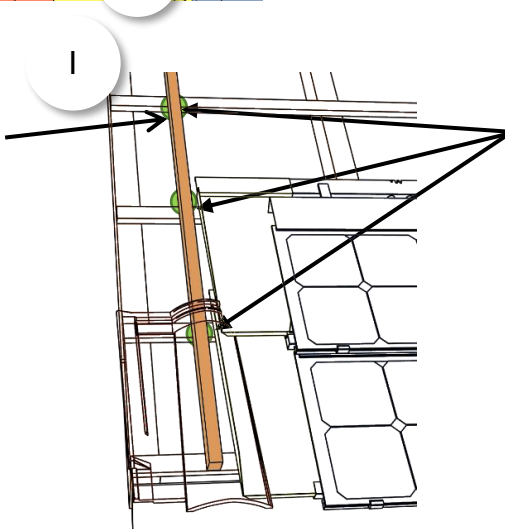
4. POSE DE LA PREMIERE LIGNE TUILE PHOTOVOLTAÏQUE



5. AJUSTEMENT ET VERROUILLAGE DES COULOIRS

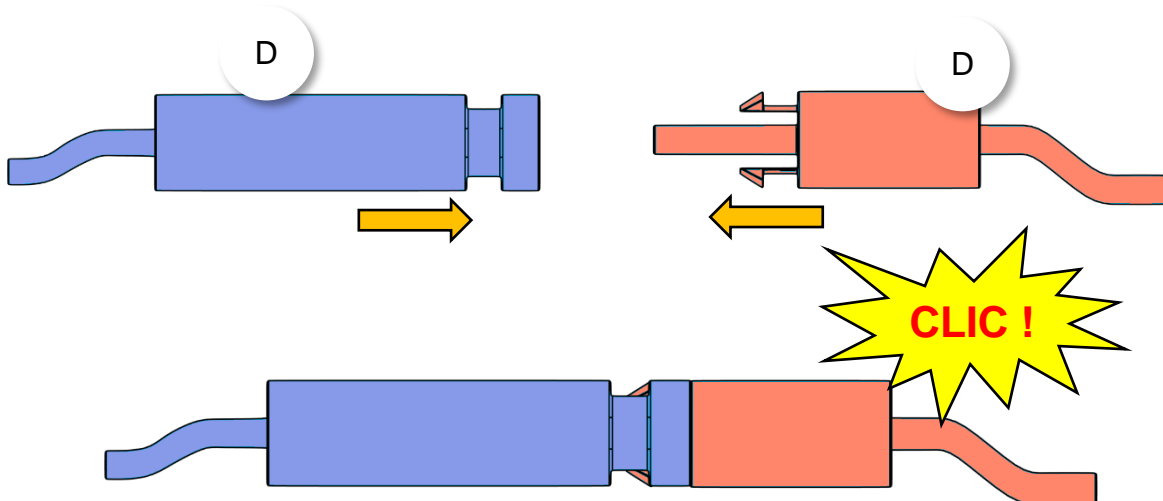
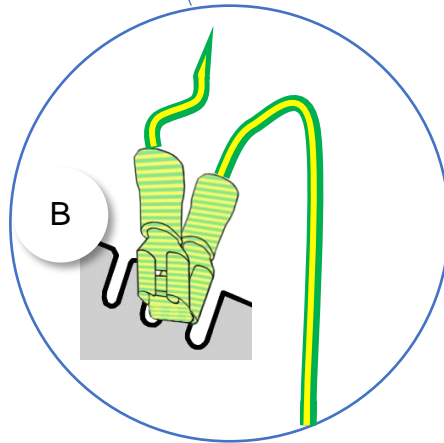
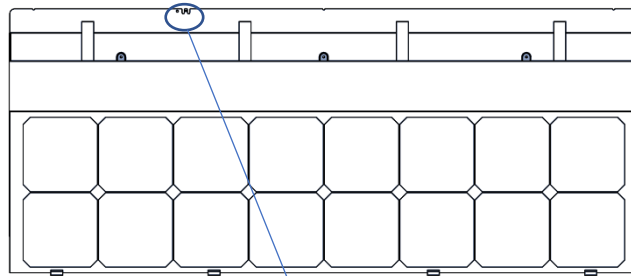
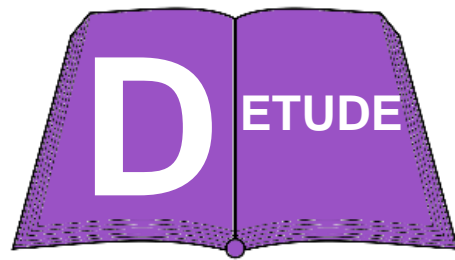
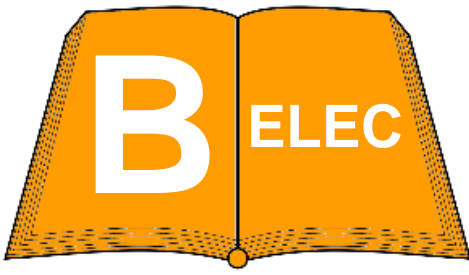


Sur champs



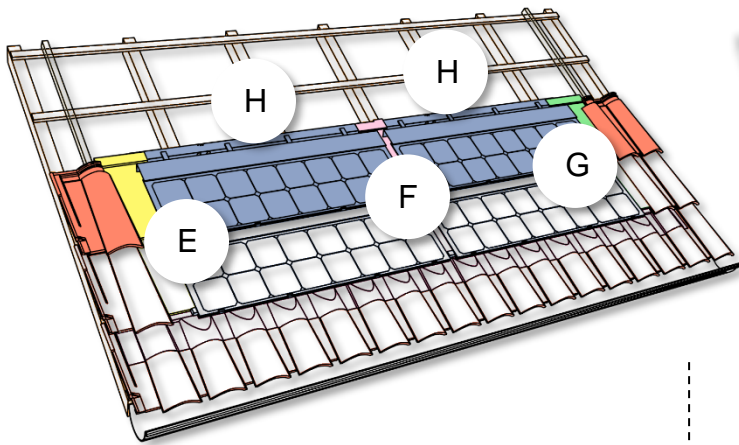
T20 & Rondelle

6. POSE DES RALLONGES ELECTRIQUES

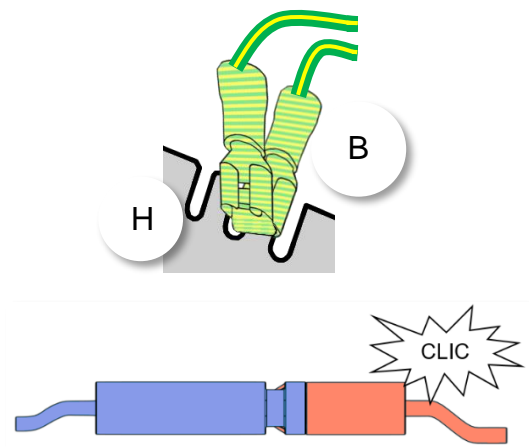
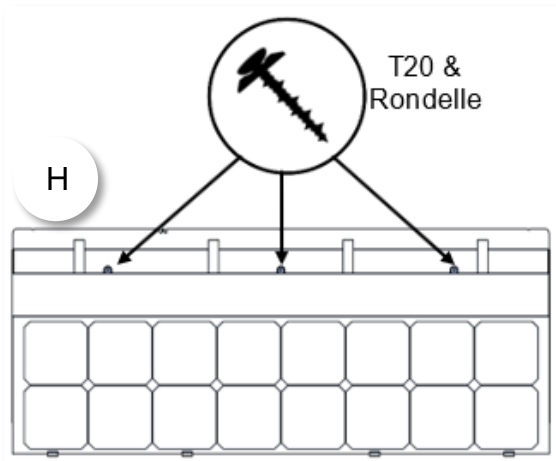
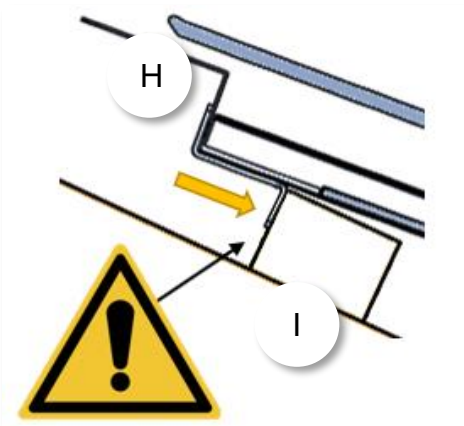
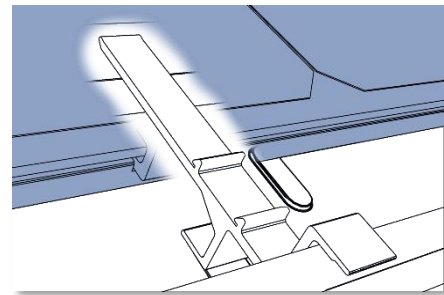
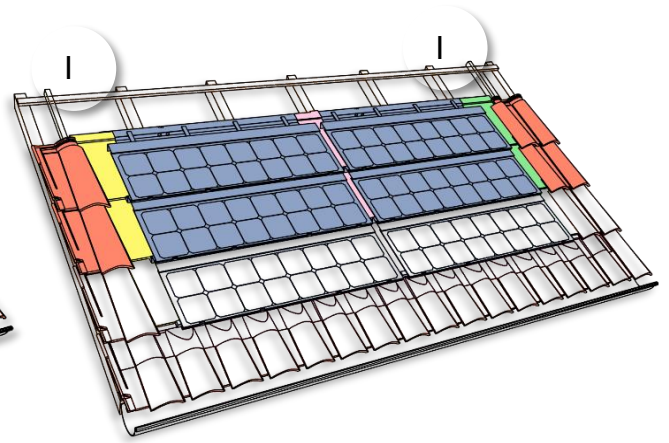


Penser à tirer les rallonges avant de poser la deuxième ligne

7. POSE DES LIGNES SUPPLEMENTAIRES



Tirer les couloirs contre le liteau

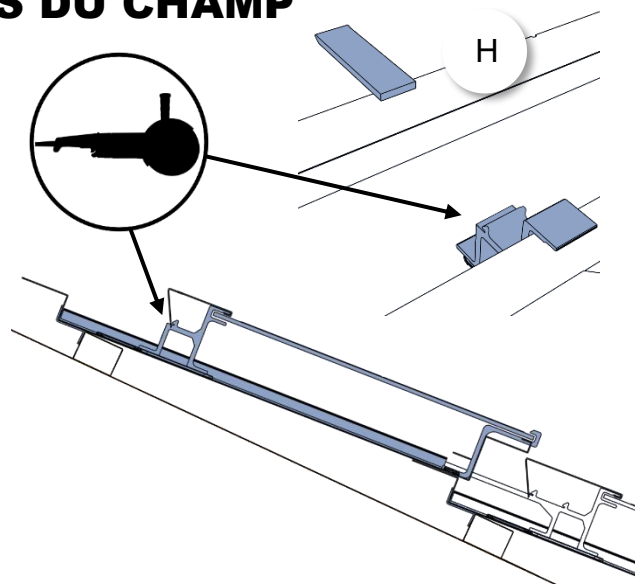
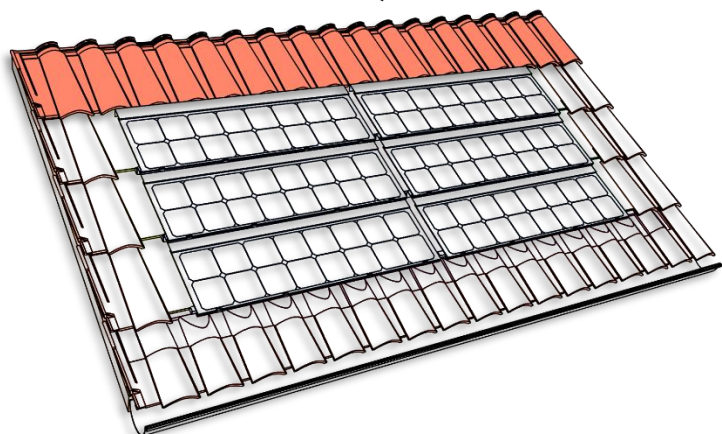


Répéter toutes ces opérations pour chaque ligne supplémentaire



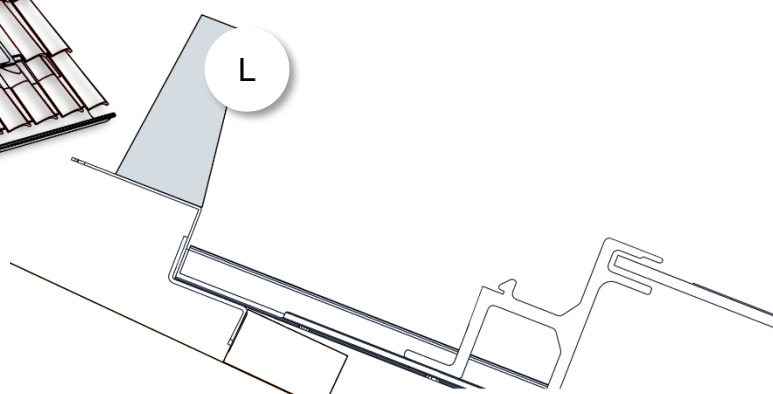
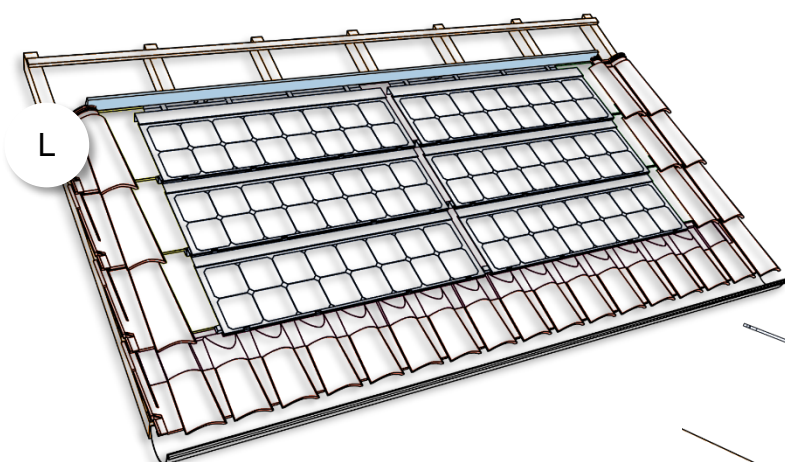
Ne pas écraser les câbles

8. POSE DES TUILES AU-DESSUS DU CHAMP PHOTOVOLTAÏQUE

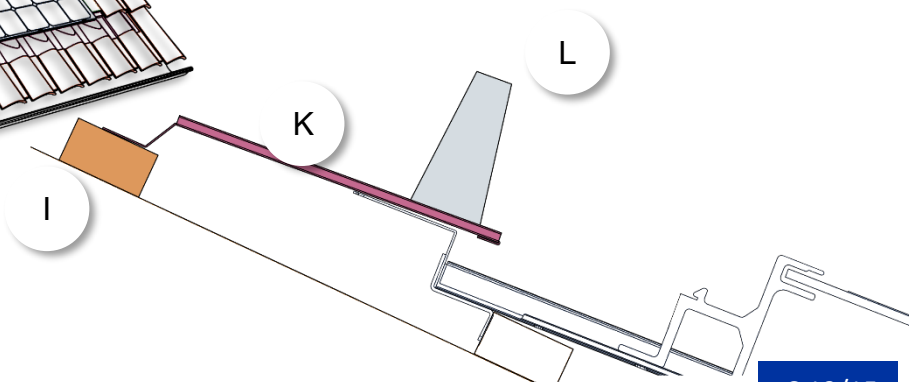
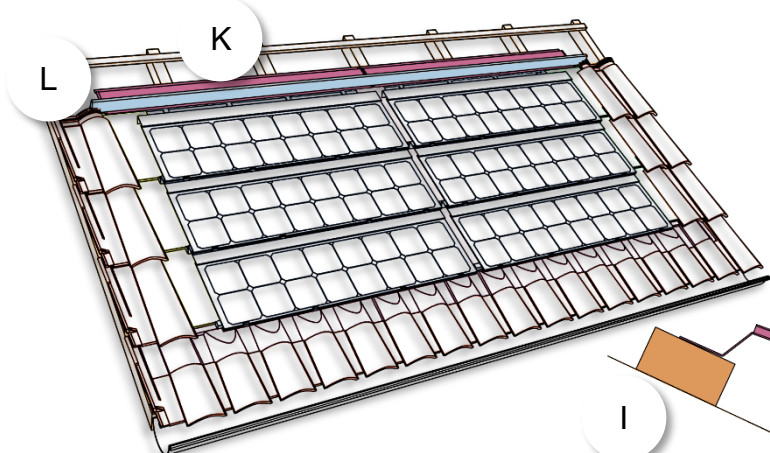


1) Particularités de mise en œuvre

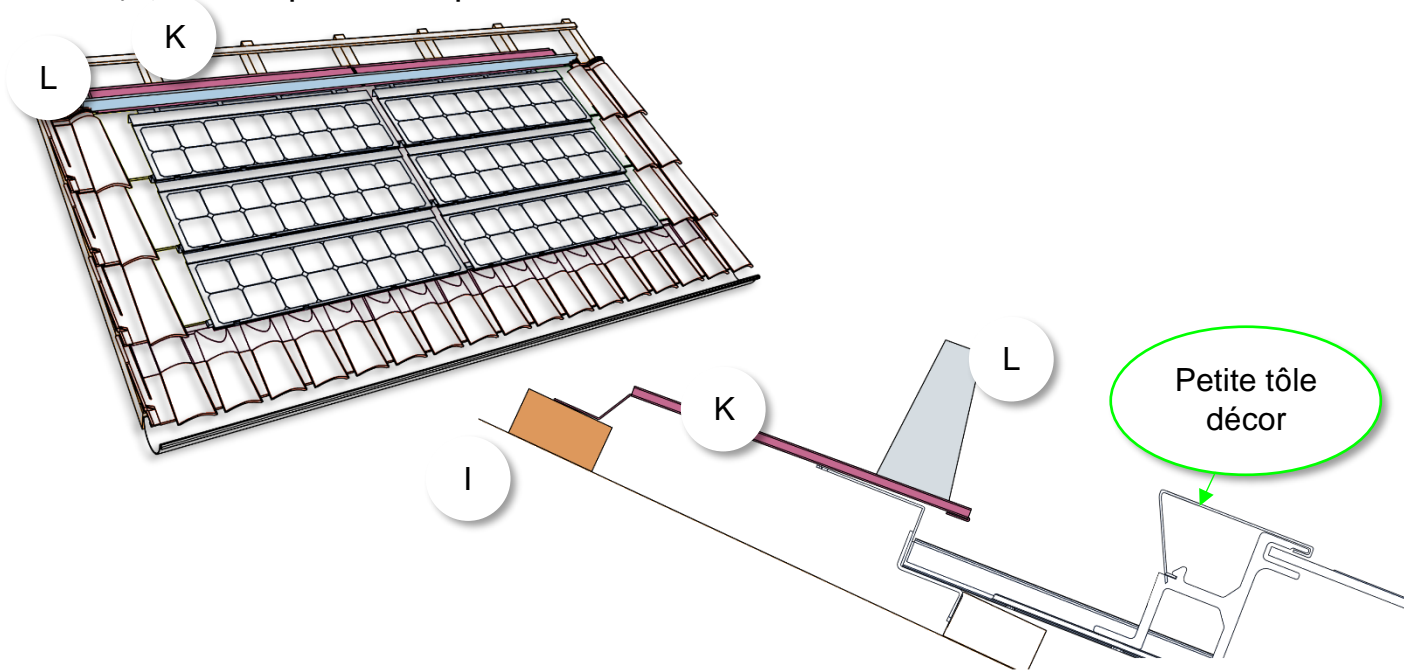
a) pour un pureau inférieur à 375 mm



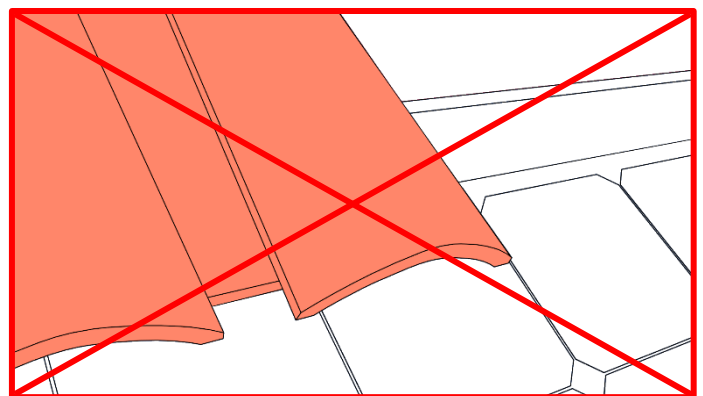
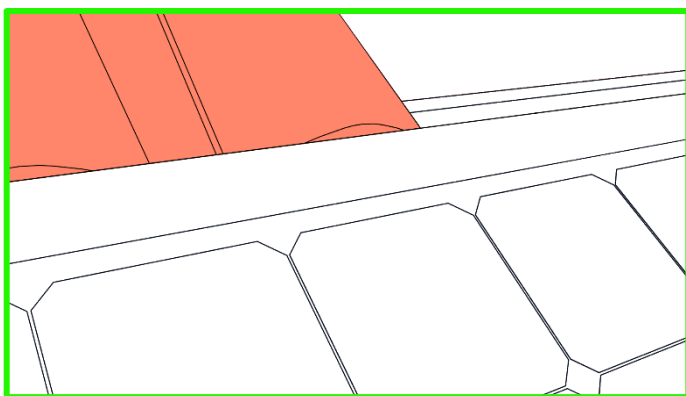
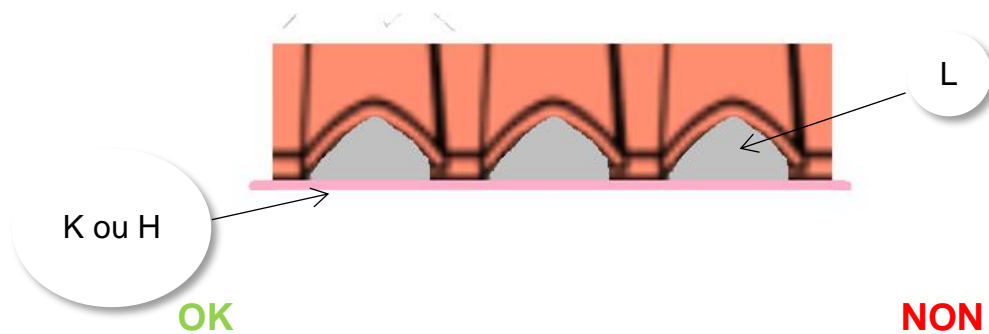
b) pour un pureau entre 375 mm et 410 mm



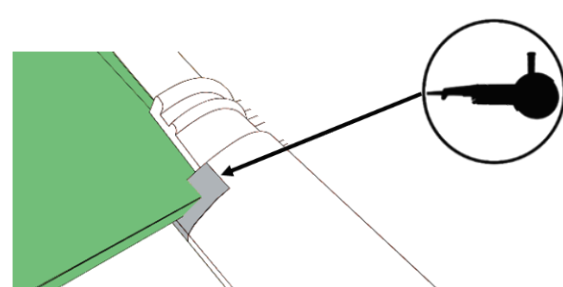
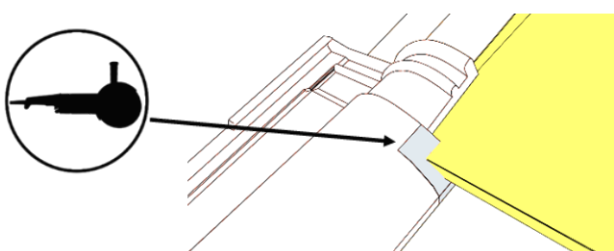
c) pour un pureau supérieur à 410 mm



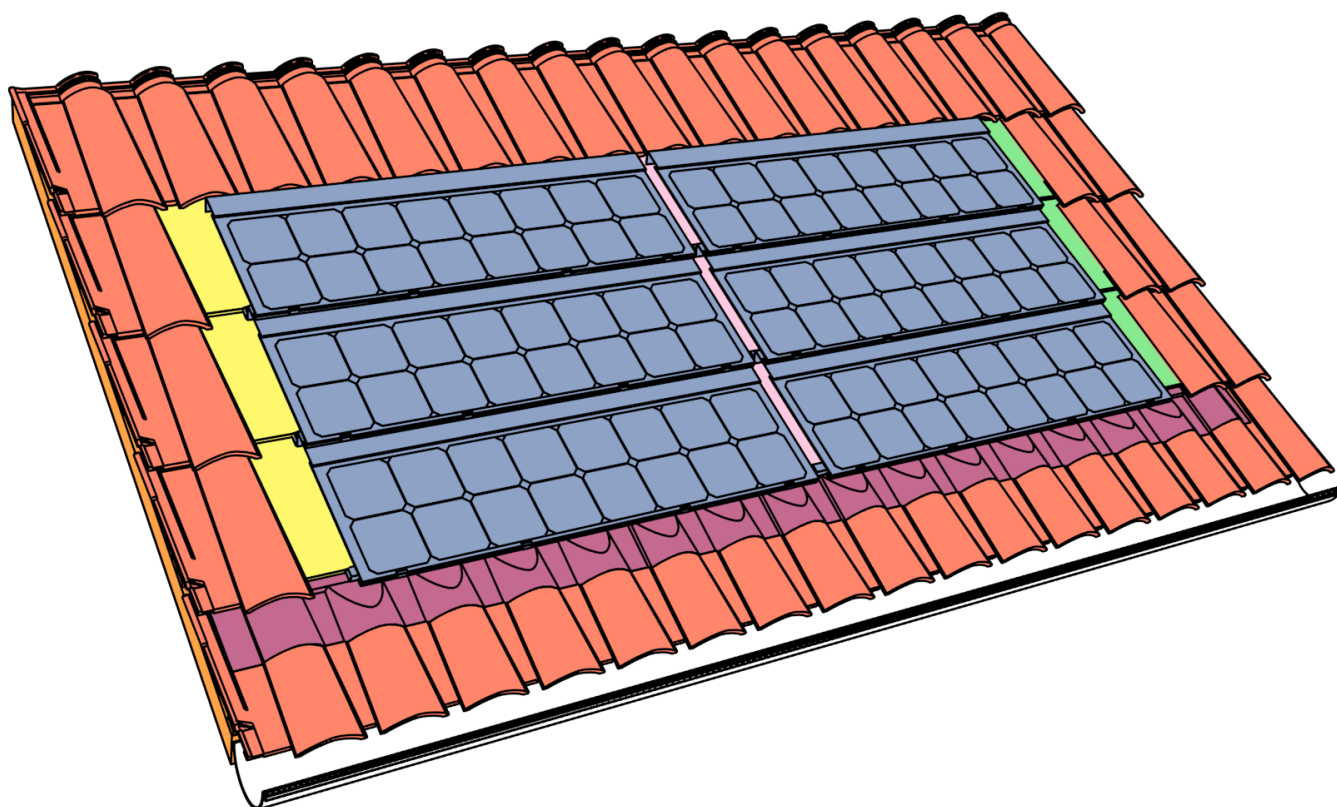
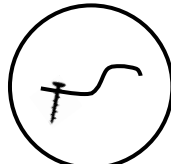
2) Pour suivre le galbe des tuiles, entailler la mousse au cutter sous chaque galbe



Particularités de mise en œuvre pour certaines tuiles de couverture



9. FIXATION DES TUILES AUTOUR DU CHAMP PHOTOVOLTAÏQUE



Ce document ne peut être ni reproduit, ni communiqué sans autorisation écrite d'EDILIANS. - Aucune illustration ne peut avoir un caractère contractuel.

EDILIANS Site d'ARNAS
3, Impasse de Chavanne
69400 ARNAS
Hotline : 0810 148 223
Email : be.solaire@edilians.com

